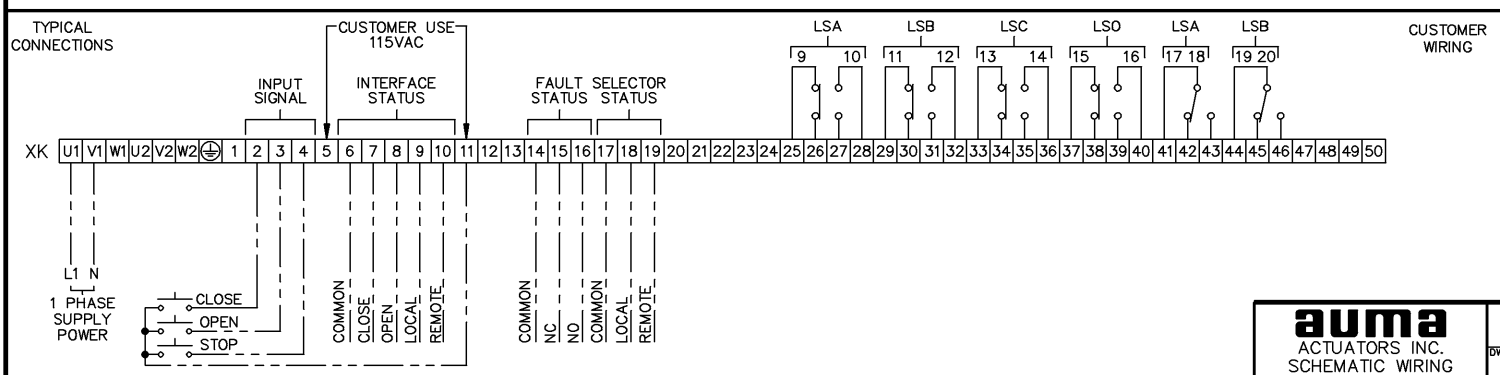


SYM.	DESCRIPTION	SYM.	DESCRIPTION
⊗	LIGHTS	▷	INVERTER
X	CUSTOMER TERMINATION	⊓	AND GATE
(KX)	CONTROL RELAY	⊗	SOLDER LINKS

LEGEND	
A1.0	INTERFACE BOARD
A2	LOGIC BOARD
AB	POWER SUPPLY
A20	MONITOR/CONTROL BOARD
F1	PRIMARY FUSE
F3-F4	SECONDARY FUSE
H R1	HEATER
K1-K2	REVERSING CONTACTOR
K3-K4	INTERPOSING RELAYS
K5-K8	STATUS RELAY
K9	FAULT STATUS RELAY
LSA (WDR)	LIMIT SWITCH INTERMEDIATE
LSB (WDL)	LIMIT SWITCH INTERMEDIATE
LSC (WSR)	LIMIT SWITCH CLOSE
LSO (WOEL)	LIMIT SWITCH OPEN
M	MOTOR
S1	SW.-TORQUE SEATING, CLOSE
S2	SW.-SEAL-IN, BLINKER, TORQUE FAULT
S3	SWITCH - TORQUE SEATING, OPEN
S11	SELECTOR SWITCH
TH	MOTOR THERMAL SW. (AUTO-RESET)
TSC (DSR)	TORQUE SWITCH CLOSE
TSO (DOEL)	TORQUE SWITCH OPEN

CONTACT	VALVE POSITION INTERMEDIATE		
	OPEN	INTERMEDIATE	CLOSE
TSC	1		
TSC	2		
TSO	3		
TSO	4		
LSC	5		
LSC	6		
LSO	7		
LSO	8		
LSA	9		
LSA	10		
LSB	11		
LSB	12		
LSC	13		
LSC	14		
LSO	15		
LSO	16		
LSA	17		
LSA	18		
LSB	19		
LSB	20		



NOTES:

- FIELD WIRING BY OTHERS
- PAIRED SWITCHES WITHIN BRACKETS MUST HAVE SAME VOLTAGE
- ACTUATOR DRAWING SHOWS THE UNIT IN THE MID-POSITION
- FAULT STATUS K9 SHOWN IN FAULT CONDITION.
*FAULT STATUS INCLUDES: (COLLECTIVE)
● THERMAL OVERLOAD | ● LOSS OF POWER
● LOSS OF PHASE | ● TORQUE SW. TRIP (MID-TRAVEL)
- J1-J3 SOLDER LINKS FOR LIGHTS ON IN MID TRAVEL OR
J2-J4 SOLDER LINKS FOR LIGHTS ON AT END OF TRAVEL