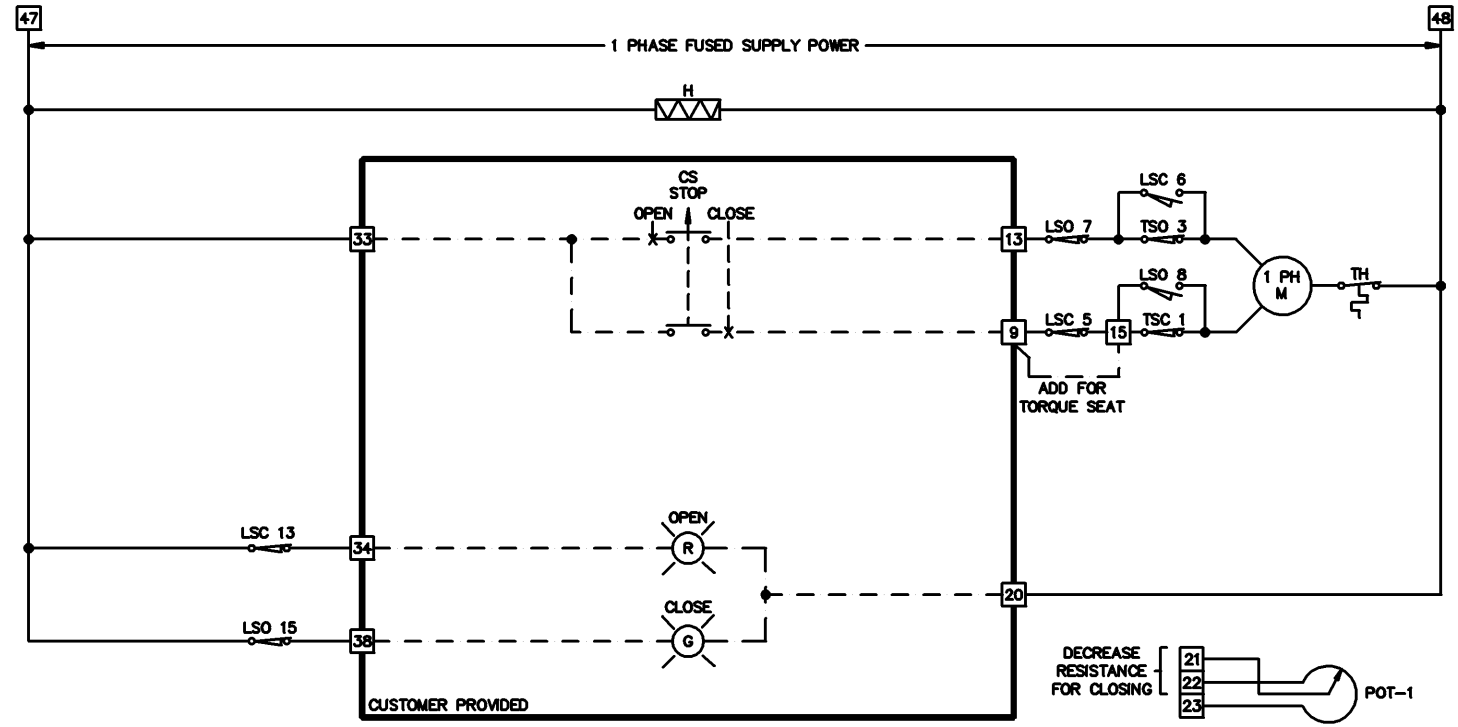


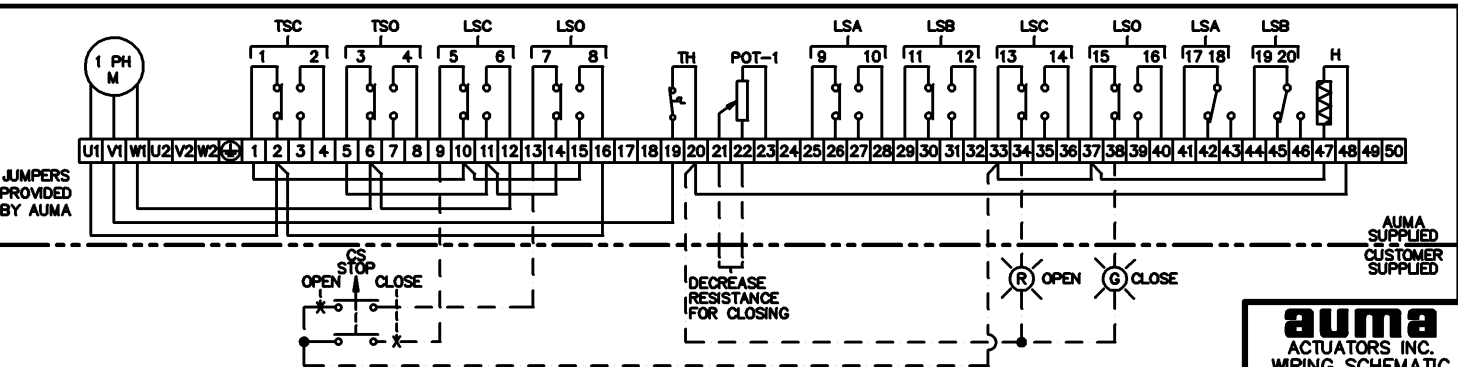
LEGEND

CS	CONTROL SWITCH
H	HEATER
LSA (WDR)	LIMIT SWITCH INTERMEDIATE
LSB (WDL)	LIMIT SWITCH INTERMEDIATE
LSC (WSR)	LIMIT SWITCH CLOSE
LSO (WOL)	LIMIT SWITCH OPEN
M	MOTOR
POT	POTENTIOMETER
TH	MOTOR THERMAL SW. (AUTO-RESET)
TSC (DSR)	TORQUE SWITCH CLOSE
TSO (DOL)	TORQUE SWITCH OPEN

SYM.	DESCRIPTION	SYM.	DESCRIPTION
	LIGHTS		CUSTOMER TERMINATION
	GROUND		



CONTACT	VALVE POSITION		
	OPEN	INTERMEDIATE	CLOSE
TSC 1	█		
TSC 2		█	
TSO 3	█		
TSO 4		█	
LSC 5	█		
LSC 6		█	
LSO 7	█		
LSO 8		█	
LSA 9	█		
LSA 10		█	
LSB 11	█		
LSB 12		█	
LSC 13	█		
LSC 14		█	
LSO 15	█		
LSO 16		█	
LSA 17	█		
LSA 18		█	
LSB 19	█		
LSB 20		█	



- NOTES:**
1. — — — FIELD WIRING BY OTHERS
 2. PAIRED SWITCHES WITHIN BRACKETS MUST HAVE SAME VOLTAGE
 3. ACTUATOR DRAWING SHOWS THE UNIT IN THE MID-POSITION
 4. A MINIMUM TIME DELAY OF 100 MILLISECONDS IS REQUIRED FOR MOTOR REVERSAL

auma
ACTUATORS INC.
WIRING SCHEMATIC

1 PHASE SG	14/01/2004	ADDED NOTE 4	MG	PH	1
NORM	WRING DWG	DESCRIPTION	BY/DATE	APP/DATE	REV
KMS91 TP102/231/JA -S					